

NOTE:

CONSTRUCTION TOLERANCES:

+10 mm OVERALL FOR WIDTH
+50 mm HEIGHT

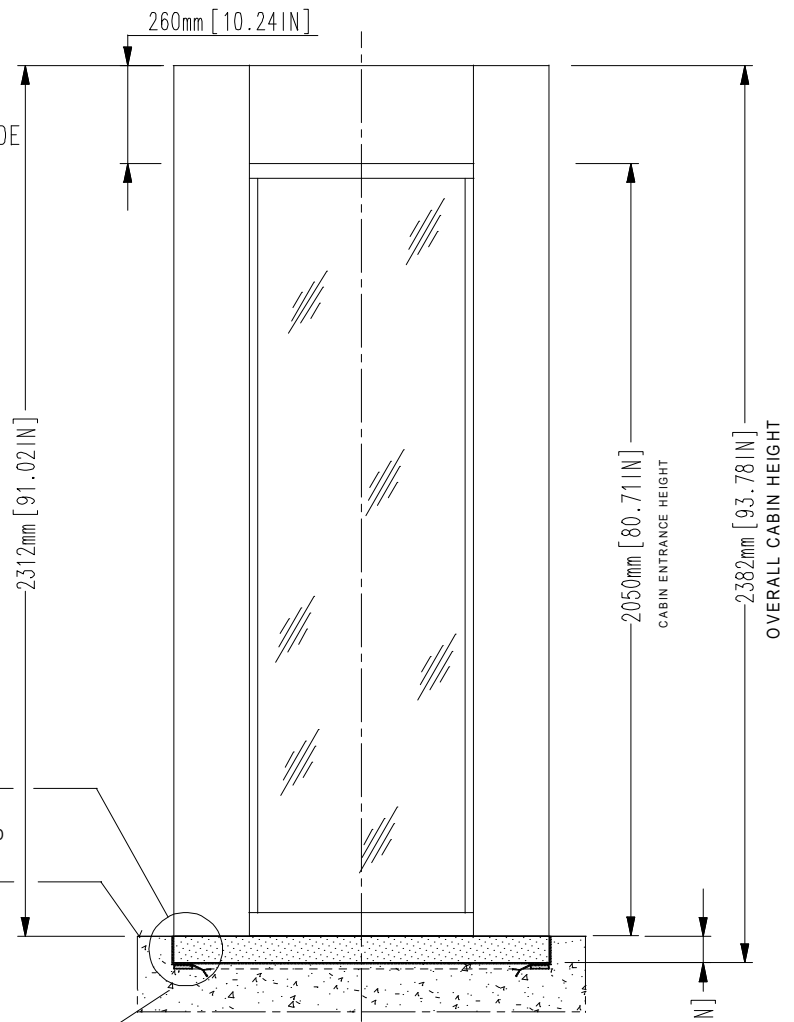
INSTALLATION REQUIREMENT

SPACE FOR MAINTENANCE
ABOVE TOP OF THE CABIN ON
THE INTERNAL SIDE:

- MIN. 300 mm [11.81"]
- RECOMMENDED 750 mm [29.53"]
- If space does not meet the required specifications contact us to discuss alternatives

-Unit must be fixed into suitable frame and finished by others

FRONT VIEW
NON SECURE SIDE

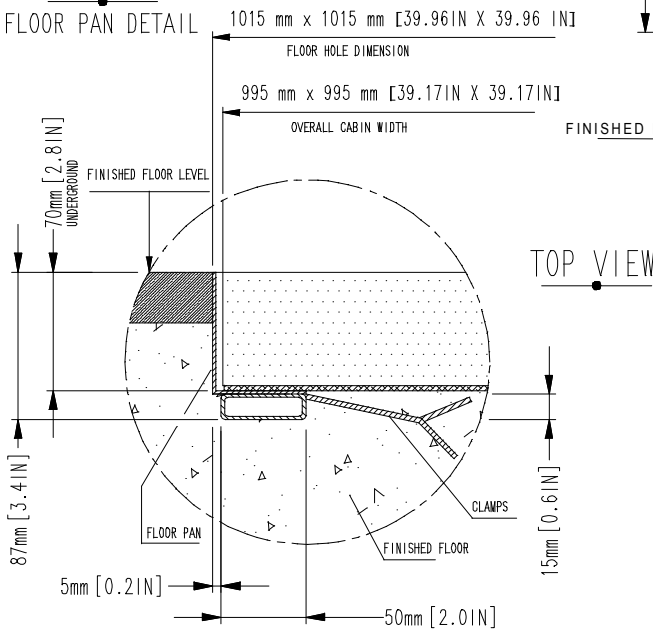


FLOOR PAN
INSTALLATION
SEE DETAIL 'A'

FINISHED
FLOOR
LEVEL

DETAIL "A"

FLOOR PAN DETAIL



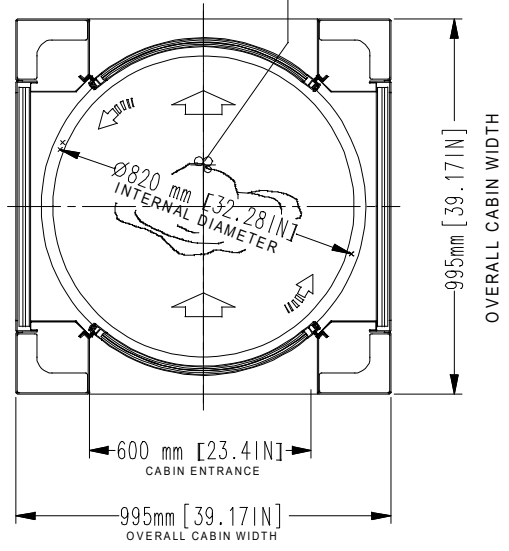
CABLES ENTRY FROM TOP OF CABIN
2 CABLES CONDUITS Ø1"
1 CABLE CONDUIT Ø1"1/4

70mm [2.76IN] RECESSED INTO THE GROUND

TOP VIEW

SECURE
SIDE


NON SECURE
SIDE



NOTE:

- unit must be installed on to a level floor (suggested flatness tolerance: ±1 mm)

- coating option: 2 mm thickness in addition to size

REV	DATE	REVISION DESCRIPTION	DRAWN BY
DRAWN BY: L. BERTAZZO		DESIGNED AND MANUFACTURED BY:	DISTRIBUTED BY:
DATE: 05/12/2018		 <p>designed for your security</p>	
DRAWING NUMBER: EARC455			
REVISION: 0	TITLE/DESCRIPTION		<p><i>Cabin recessed into the floor (ramp or floor pan required)</i></p> <p><i>Overall dimensions and mechanical installation requirement</i></p>
SCALE: 1:20	E1-E1K MY16		
PAGE 1 OF 1			

THIS DOCUMENT IS AN ALLUSER INDUSTRIE PROPERTY AND IT CANNOT BE COPIED OR TRANSFERRED TO THIRD PARTIES WITHOUT A PREVIOUS WRITTEN AUTHORIZATION. DUE TO OUR POLICY OF CONTINUOUS PRODUCT DEVELOPMENT, ALL DIMENSIONS AND SPECIFICATIONS DESCRIBED IN THIS DOCUMENT ARE SUBJECT TO CHANGE WITHOUT NOTICE.